

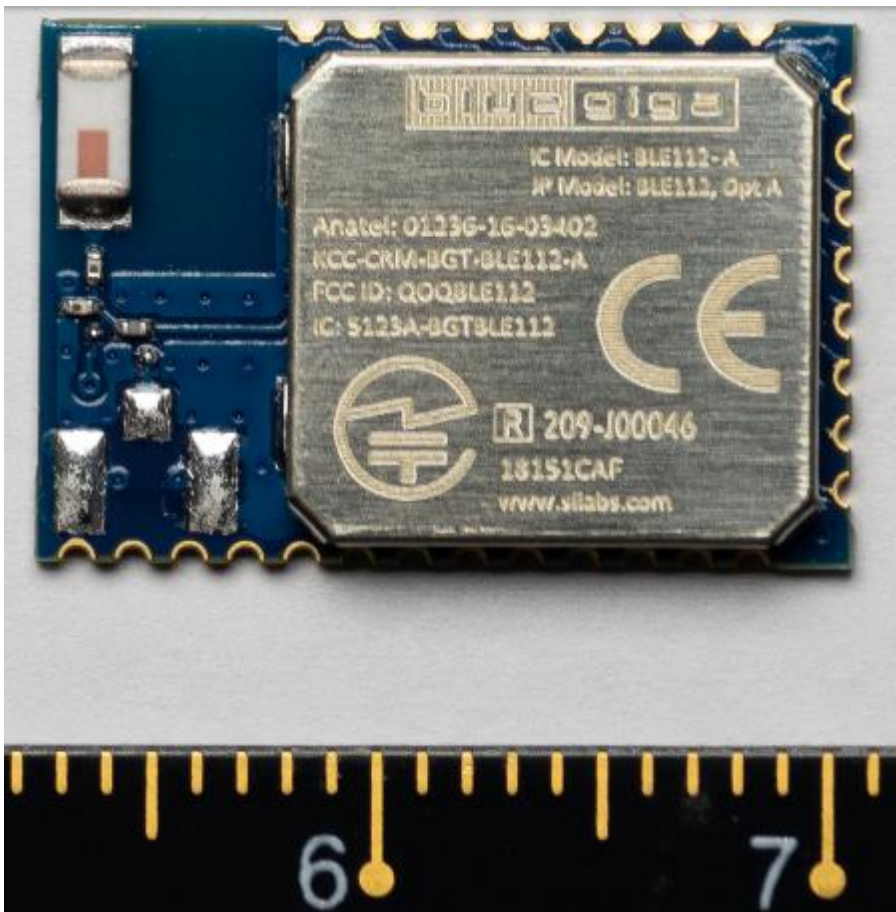
Technical specifications:

- TX power (nominal): +3 to +19 dBm depending on the model
- RX sensitivity (nominal): -98 to -86 dBm depending on the model
- Integrated antenna or connector for external antenna (not outdoor)
- Different hardware interfaces depending on the model
- Supply voltage:
 - 2,0 - 3,6 VDC for BLE112
 - 2,7 - 3,6 VDC for WT11u and WT12
 - 3,0 - 3,6 VDC for WT41u
- Temperature range: -40 to +85 °C
- Dimensions: see table below

Model	Bluetooth version	Nominal TX power	RX sensitivity	Dimensions [mm]
BLE112	v.4.0 (BLE*)	+3 dBm	-91 dBm	18,10 x 12,05 x 2,3
WT11u	v.3.0 + EDR**	+17 dBm	-4 dBm	35,75 x 14,50 x 2,6
WT12	v.3.0 + EDR**	+3 dBm	-86 dBm	25,5 x 14,0 x 2,4
WT41u	v.3.0 + EDR**	+17 dBm	-94 dBm	35,3 x 14,0 x 5,65

* Bluetooth Low Energy

** Enhanced Data Rate

Example photographs of representative samples:**Figure 1 BLE112-A top**

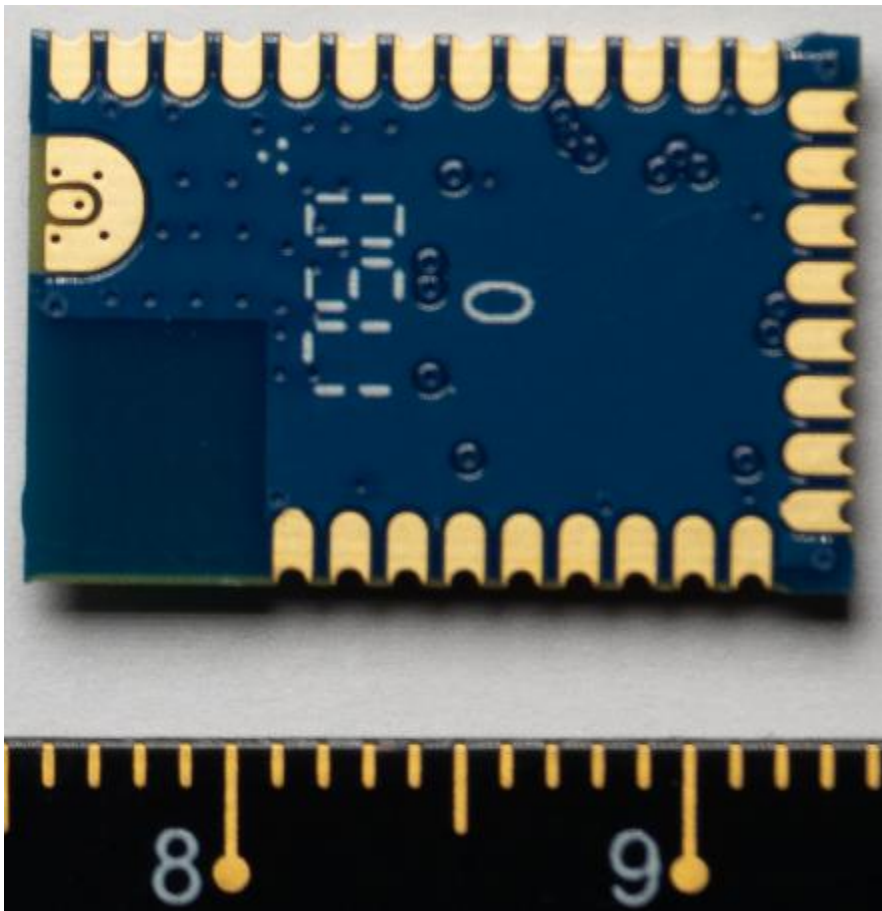


Figure 2 BLE112-A bottom

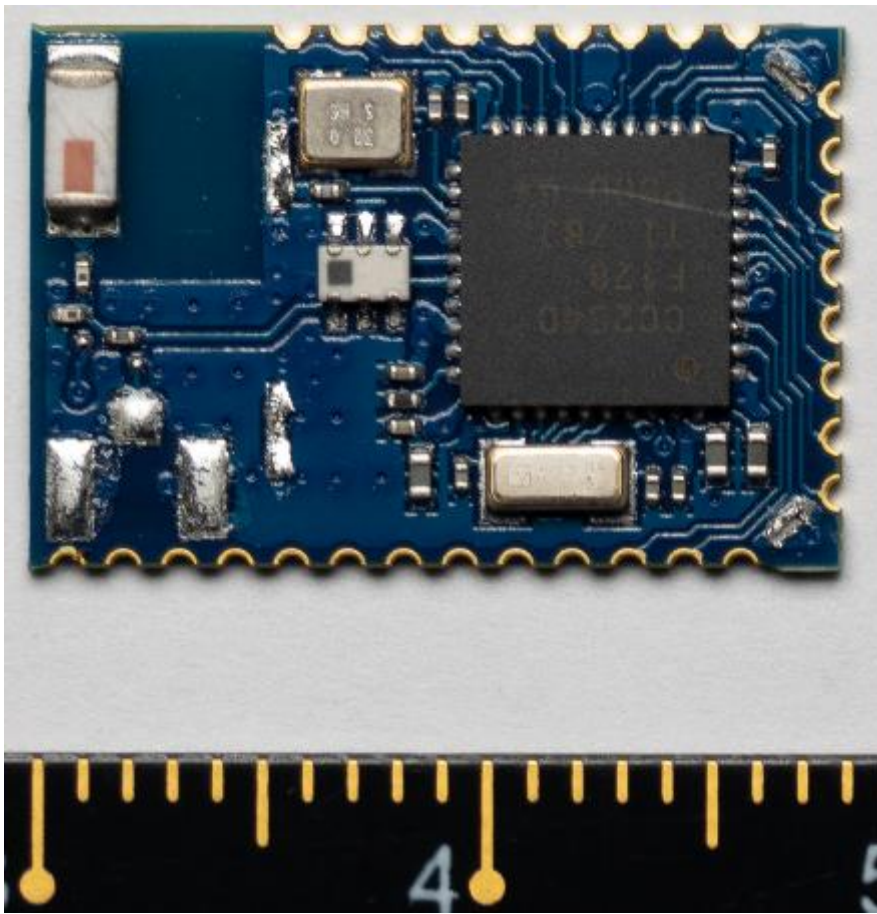


Figure 3 BLE112-A internal

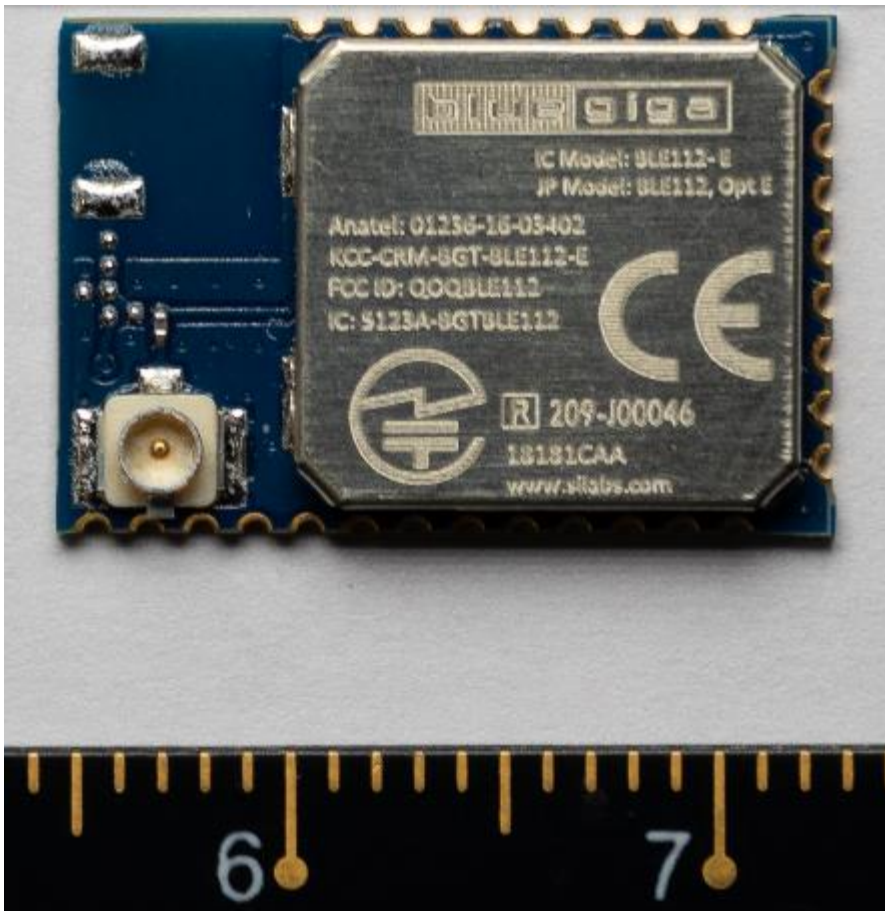


Figure 4 BLE112-E top

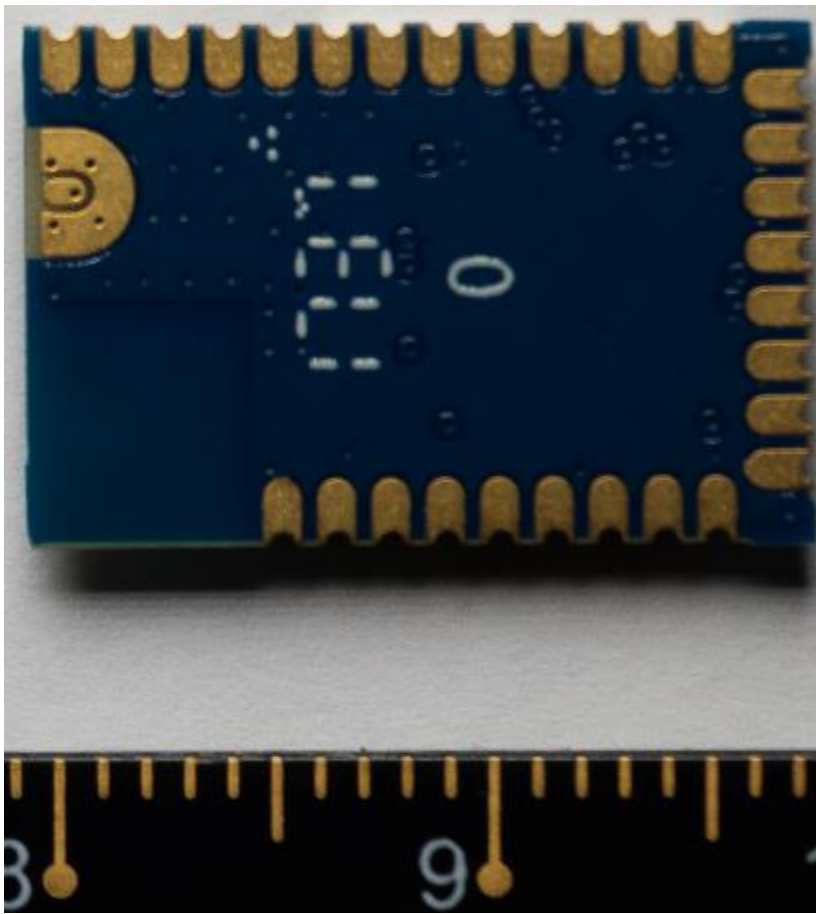


Figure 5 BLE112-E bottom

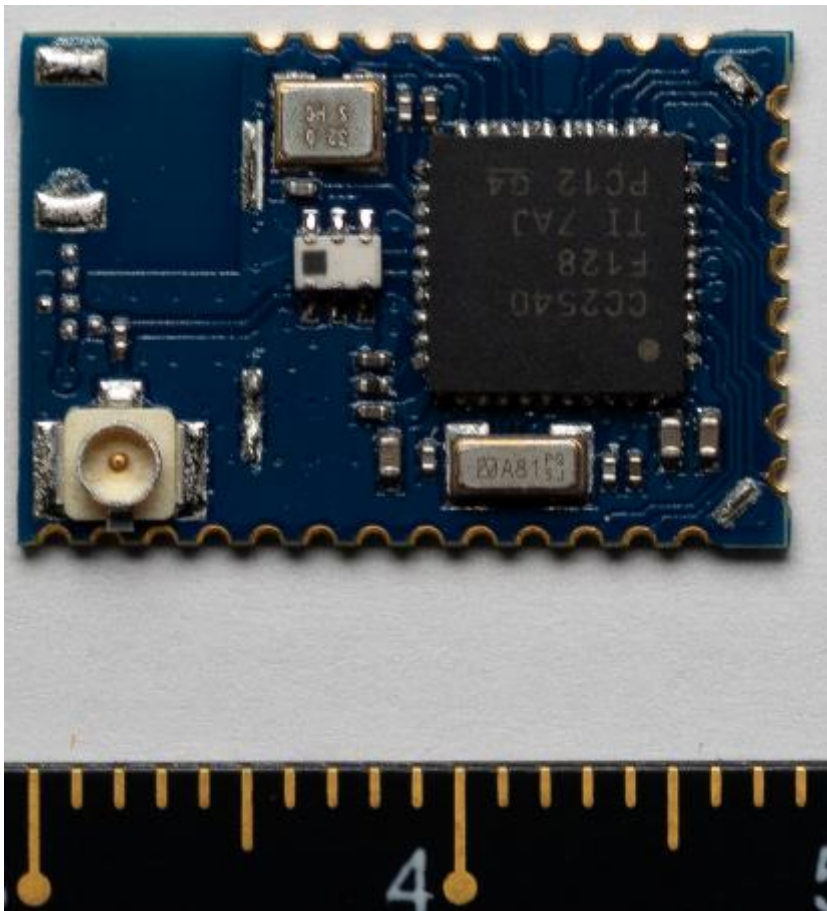


Figure 6 BLE112-E internal

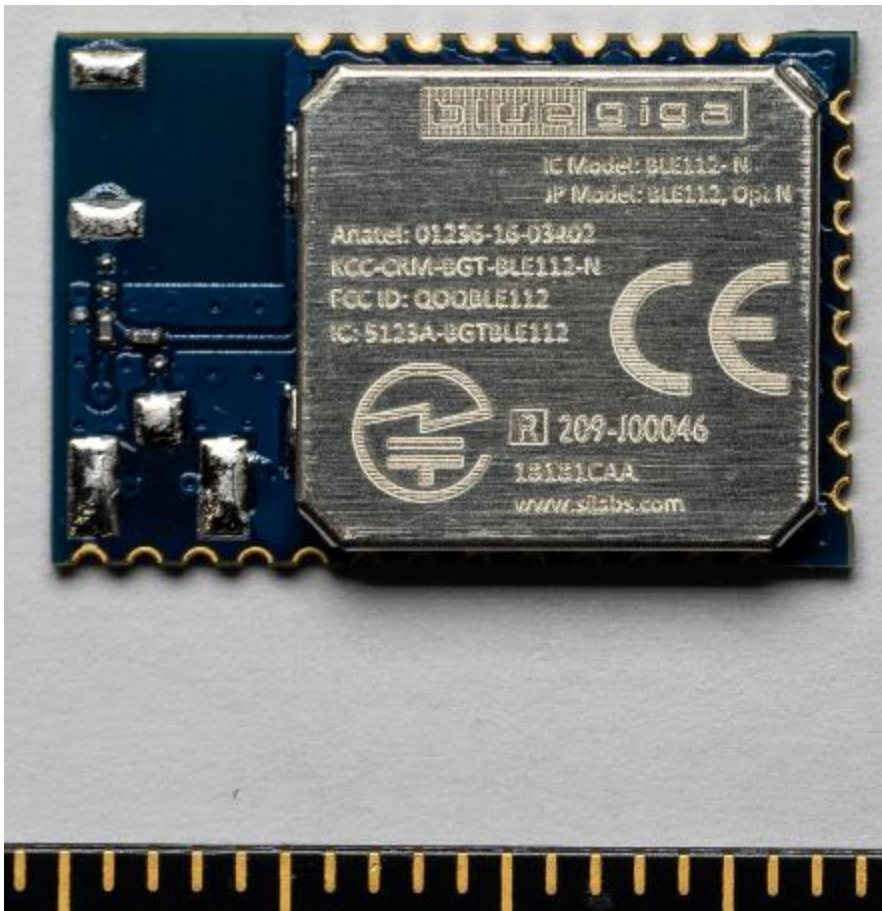


Figure 7 BLE112-N top

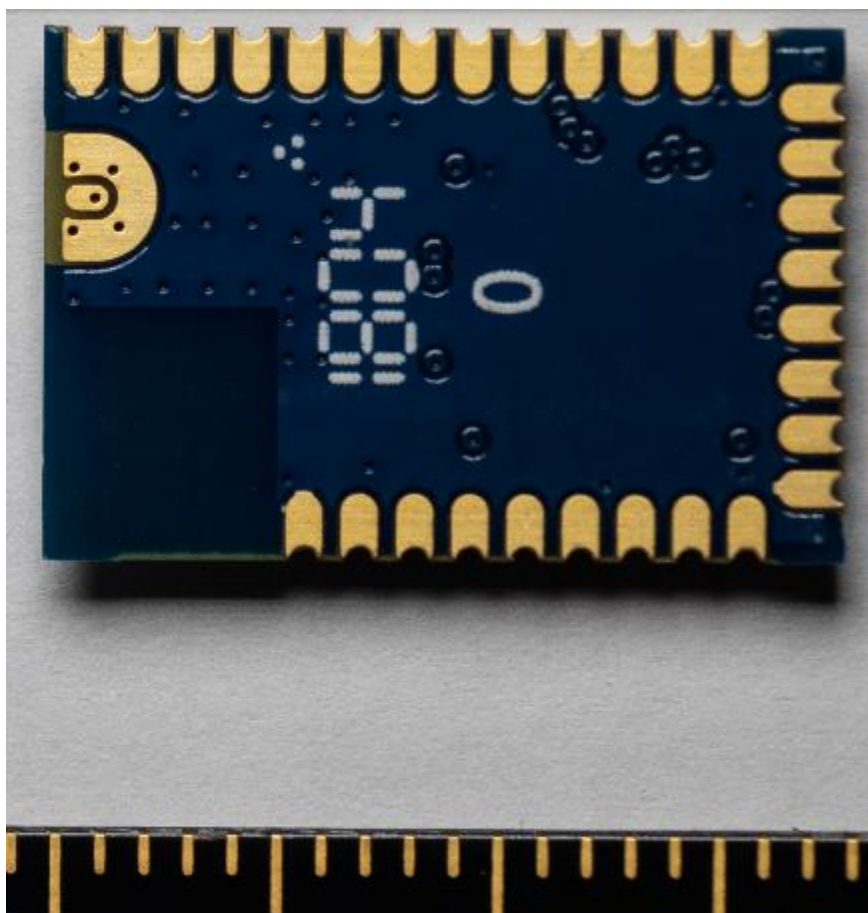


Figure 8 BLE112-N bottom



Figure 9 BLE112-N internal



Figure 10 WT11u-E top

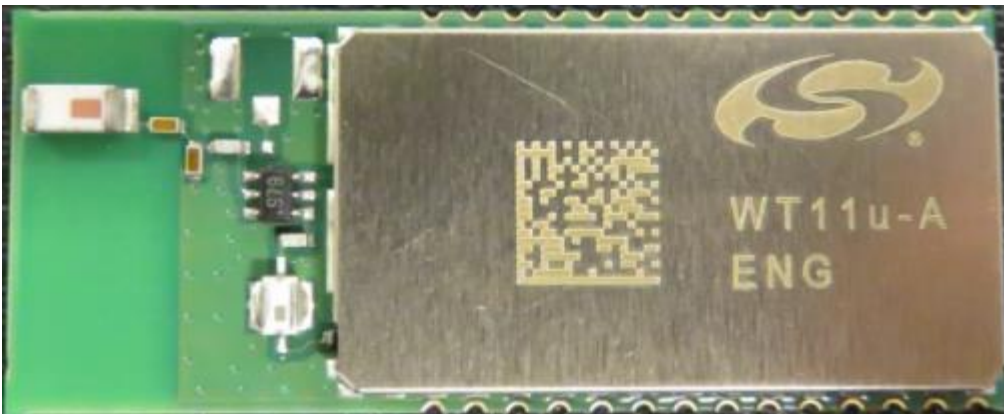


Figure 11 WT11u-A top

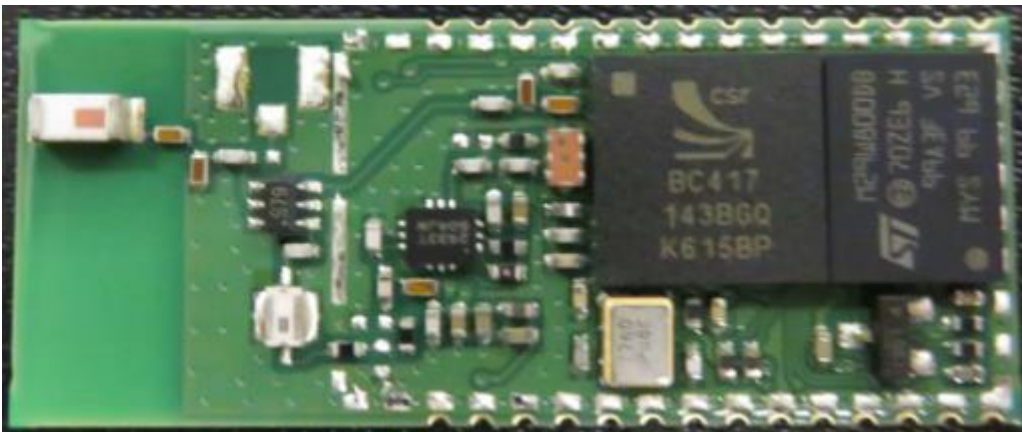


Figure 12 WT11u-A internal



Figure 13 WT11u-E internal

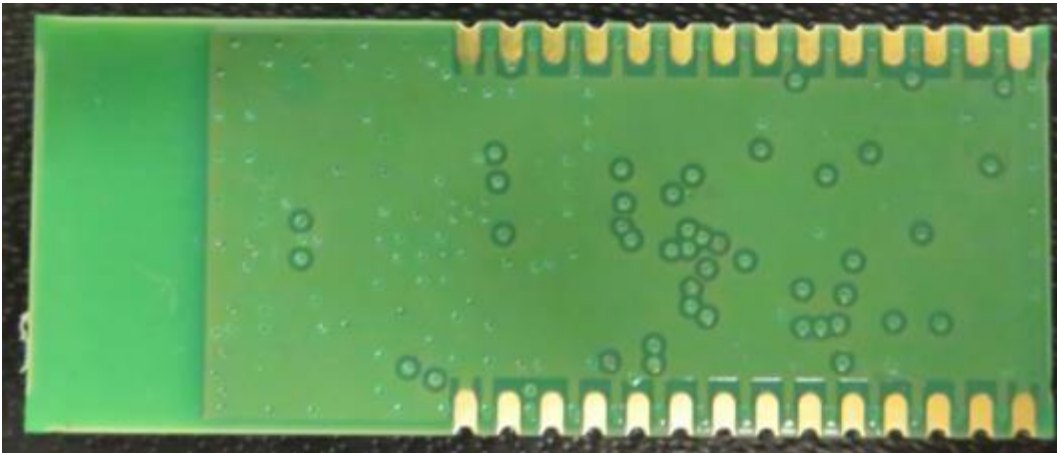


Figure 14 WT11u-A and WT11u-E botom view



Figure 15 WT12-A top



Figure 16 WT12-A bottom



Figure 17 WT12-A internal



Figure 18 WT41u-E top

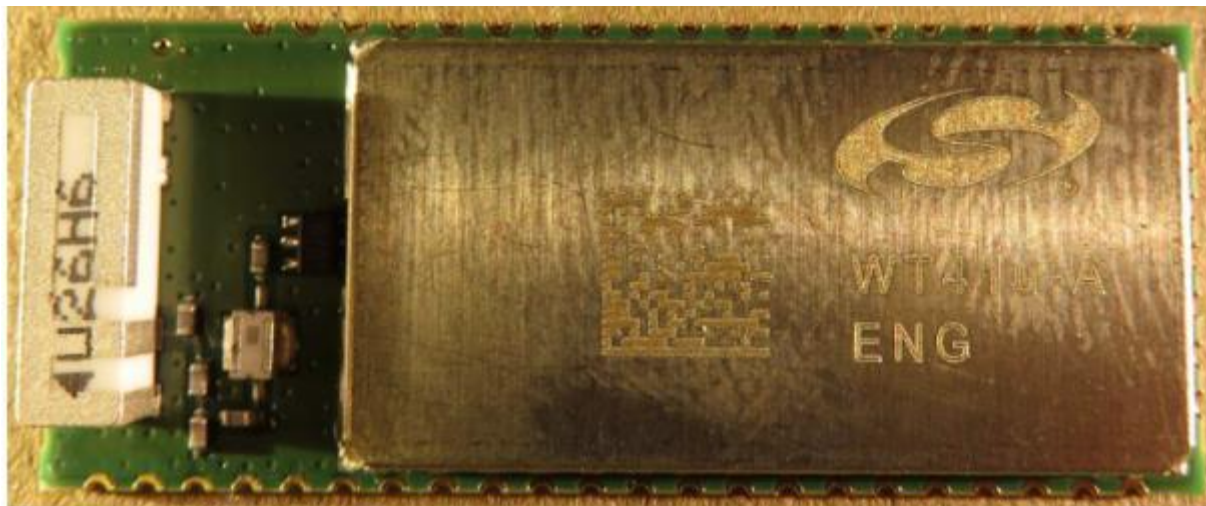


Figure 19 WT41u-A top

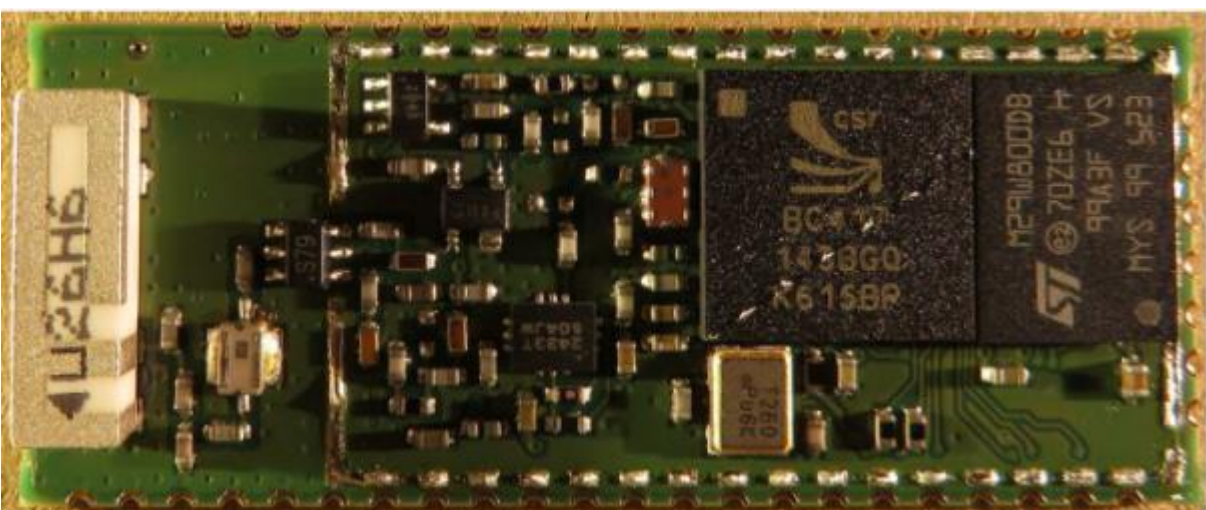


Figure 20 WT41u-A internal

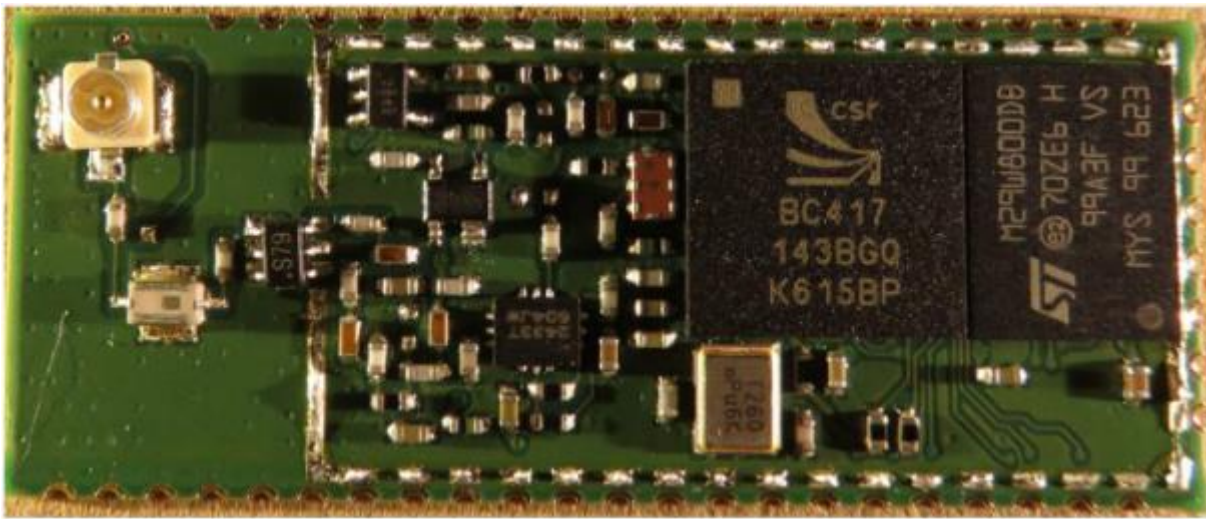


Figure 21 WT41u-E internal

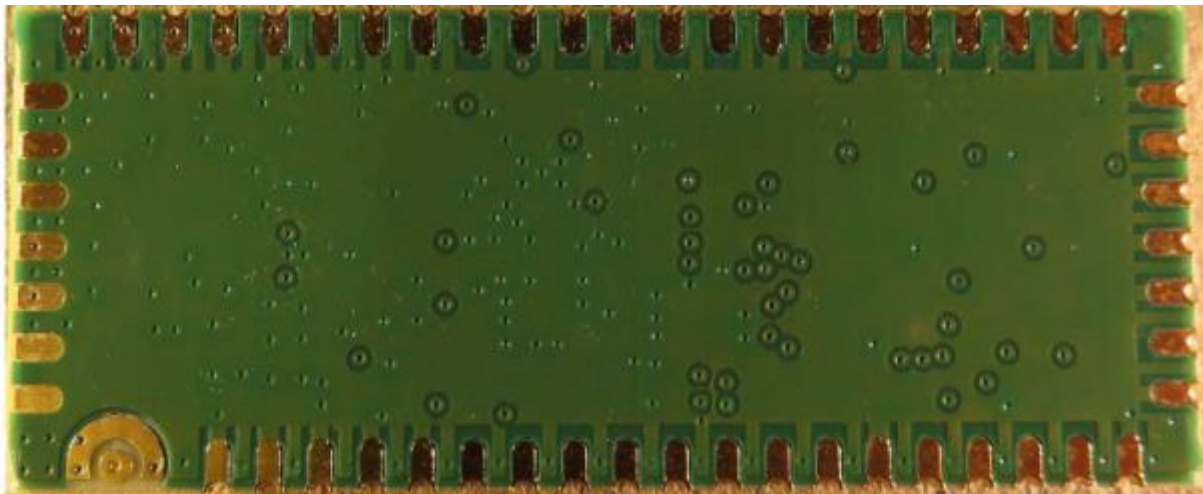


Figure 22 WT41u-A and WT41u-E bottom



Figure 23 WT41u-N top

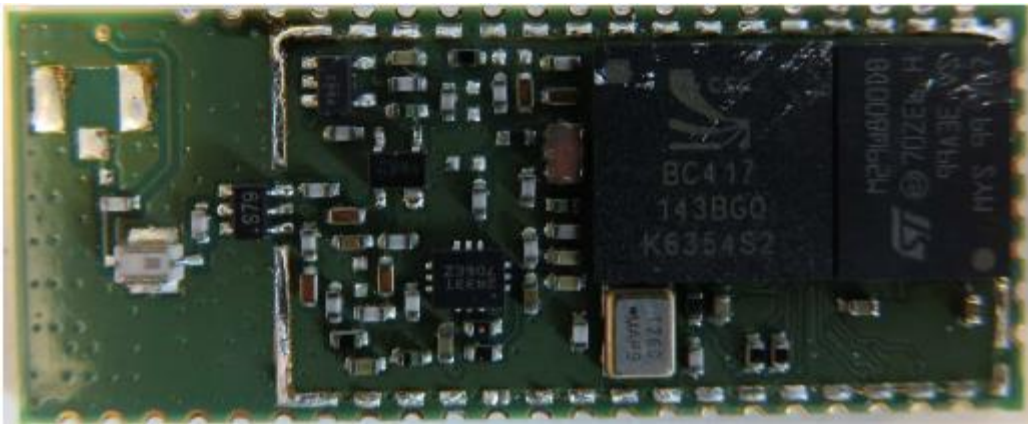


Figure 24 WT41u-N internal

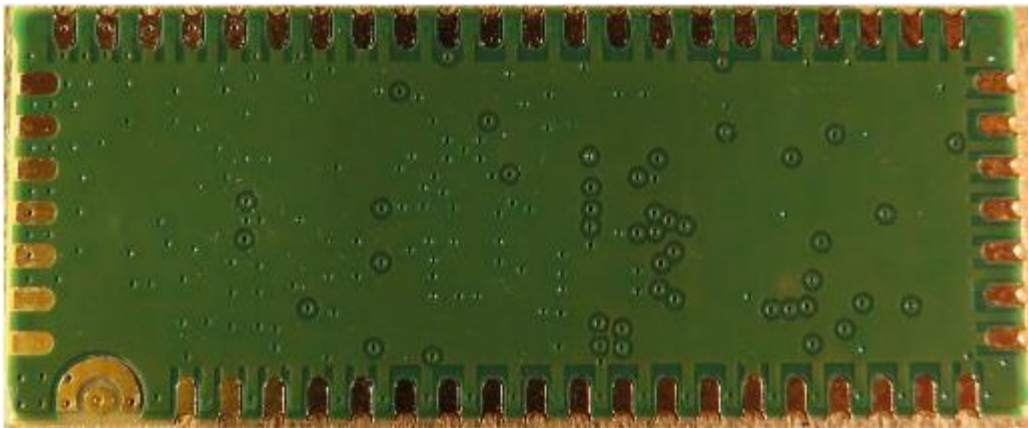


Figure 25 WT41u-N bottom